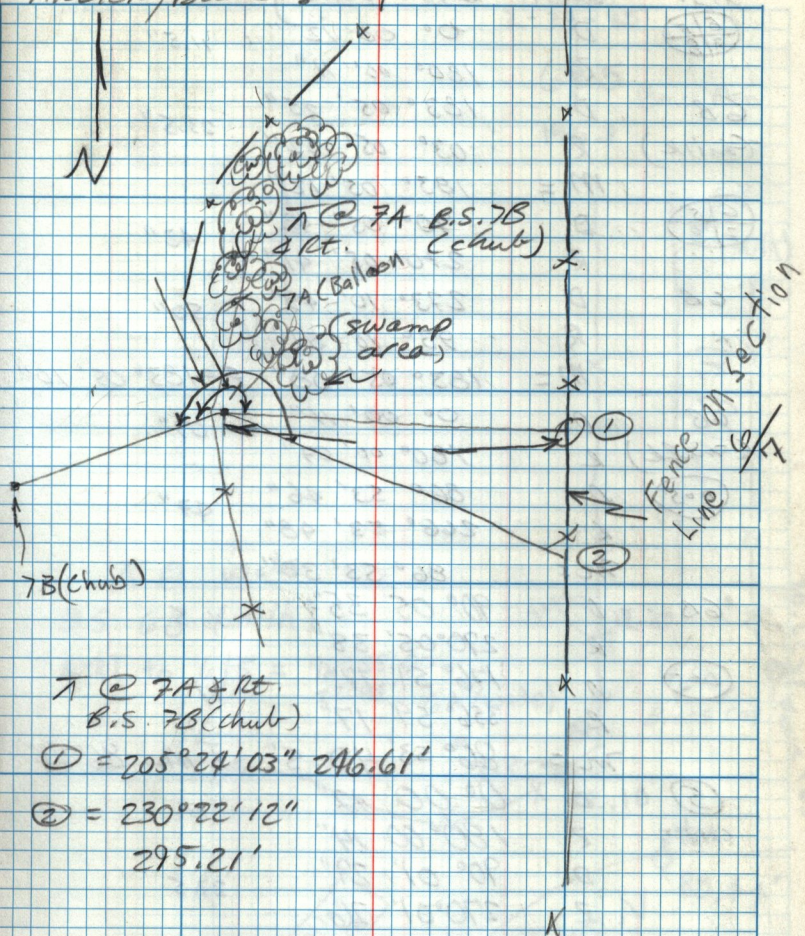


5-4-84 Sec. 7

Hillier, Butlers



π @ 7A B.S. 7B
 4 ft. (chub)
 7A (Ballast)
 (swamp area)

7B(chub)

π @ 7A & Rt.
 B.S. 7B(chub)

① = $205^{\circ}24'03''$ 296.61'

② = $230^{\circ}22'12''$
295.21'

~~61
 13 5
 17 5~~